

The University of New Mexico • MSC11 6260 • Albuquerque, NM 87131
Phone: 505-272-5757 • Fax: 505-272-6503 • email: hsc-ems@salud.unm.edu • website: www.unmems.org

How to get to Innovation Discovery Training Complex for your class: Proceed to the intersection of Lomas and Yale Blvd. At the intersection, turn north onto Yale, proceeding around the circle and continue north on Yale, then east/right on Tucker (at the stop sign). Turn into the second entrance on your right, into the M lot.

Students attending courses being held at the EMS Academy (700 Camino de Salud, Albuquerque) during the hours of 8AM-8PM Monday-Friday are responsible for making their own parking arrangements. The lot at the Academy is a monitored lot during these hours, anyone parking in any lot without a pass or having paid for a metered space will receive a ticket. Parking options:

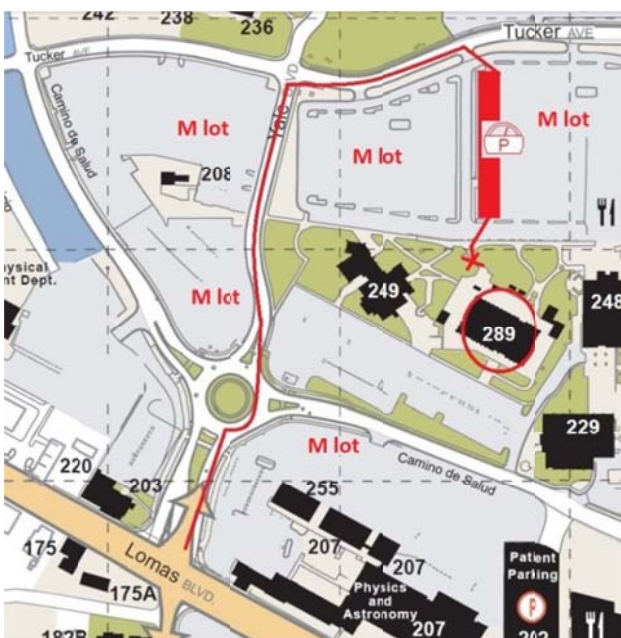
1. Metered parking, when available, is in the spaces marked for metered parking (the red block below), and they will be to your left. The meters are scattered throughout that row, accept only credit cards (no cash) and, once your meter purchase has been made, you'll be provided with a ticket/slip to place on the dashboard of your car. The fee is currently \$1 per 1/2hour and is subject to change.
2. For public transportation options, the Academy is located on the #11, #5, #790, & #12 bus lines.
3. There is also an option to purchase a daily parking pass from the EMS Academy for \$8 (which is the same price we pay for them). For those intending to purchase a pass, parking in an unlabeled M lot space, come to the Academy to obtain the pass, then return and hang on rearview mirror of vehicle after scratching off the correct lot, month, and day.

Please note that parking in spaces noted as Patient Parking, Metered Parking (without paying the meter and placing slip on dash), Handicapped Parking, Service Vehicle Spaces, Reserved spaces, or unlabeled spaces (unless utilizing a purchased daily or monthly pass) will subject drivers to the risk of incurring a parking ticket.

The IDTC is circled in red on the map below. We are just about in the center of the south side of the parking lot, east of the Dental school and West of the Family Medicine building. Visitors to the Academy will descend a flight of stairs to get from the parking lot to the Academy.

The top of the stairs that lead down from the parking lot to the Academy is located where the corner of the giant light blue metal scaffolding/ladder-type sculpture comes to a point, closest to the parking lot – there is a silver sign for the IDTC and the Academy at the top of the stairs. That corner of the sculpture actually drops down into the staircase that leads to the EMSA offices.

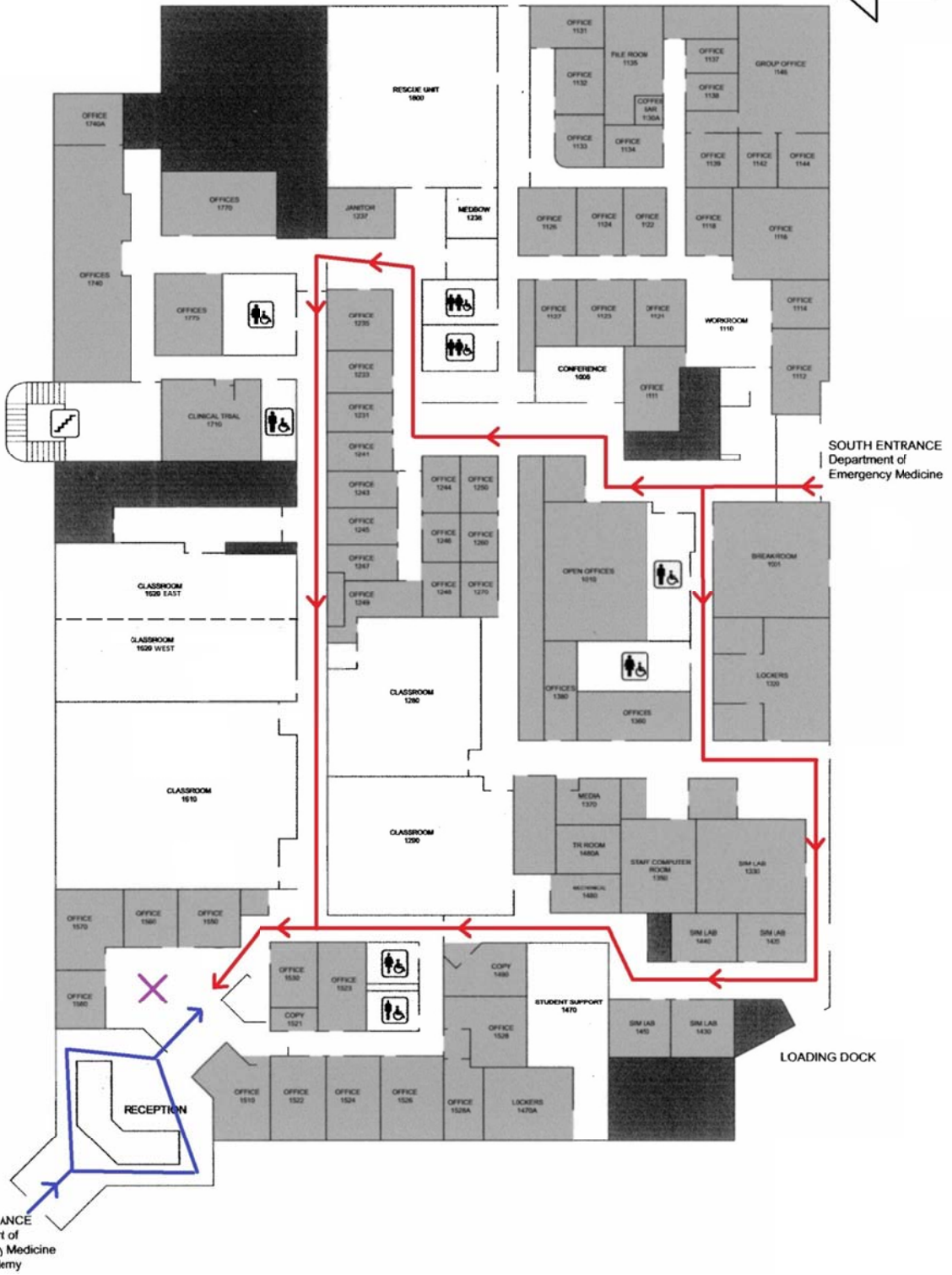
If you would like an optional route that does not involve navigating the stairs, you can enter the building at the other end of the sculpture (east end of the building) and take the elevator down to the ground floor.





LEGEND

-  WOMEN
-  MEN
-  UNISEX
-  STAIRS



M Lot